

AX-ANC-FR001

MULTIFUNCTION RELAY SWITCH

Mains powered – 230V AC



WIREPAS ANCHOR

High velocity (300ms)
Wirepas 4.0 & 5.0 compatible



OTA

Update firmware Over-The-Air



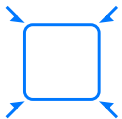
HIGH SWITCHING CAPACITY

2300W to control devices



POTENTIAL-FREE OUTPUT

Dry contact output



ULTRA COMPACT PROFIL

Installation in flush-mounted boxes
from 50mm upwards (<18mm)

The AX-ANC-FR001 module is a part of Axones product line to implement a 3-in-1 technological solution based on a Wirepas Mesh network, which allowing indoor geolocation and navigation, assets or individual tracking and metering on the same infrastructure.

It can be quickly installed on existing equipment allowing it to be connected and controlled remotely or automatically by the Wirepas Network.

Technical Specifications

Power supply: 230V AC ~50Hz
Switching capabilities: 230V AC – 10A // 30V DC – 10A
Consumption: <1W
Radio protocol: Wirepas 4.0 & 5.0
Radio frequency range: 2.4Ghz
Wirepas mode: Low latency / router
Certification: CE
Warranty: 1 year

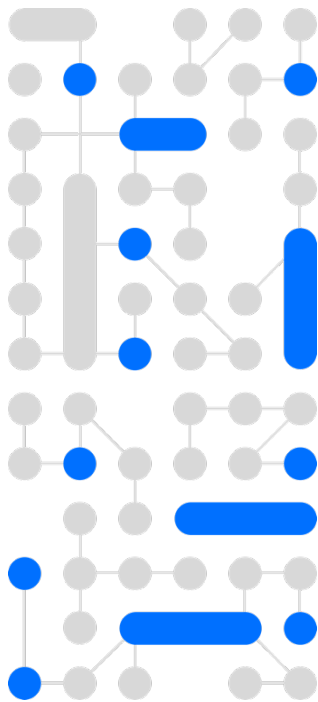
Use Cases

Asset or individual tracking (RTLS)
Control and status feedback
Indoor geolocation

Environnement

Operation temperature: -10°C à 40°C
Protection rating: IP30



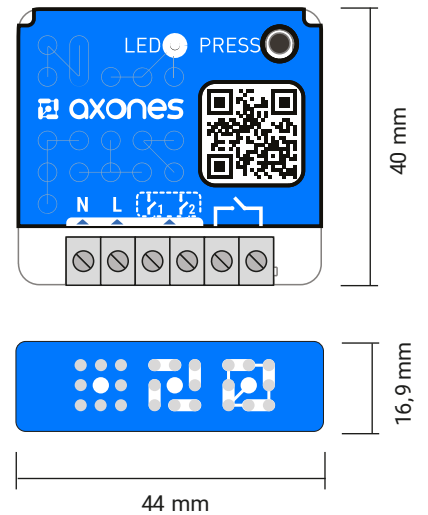


Installation & Dimensions

N	Terminal for Neutral
L	Terminal for the Line
i_1	Input terminal 1 (i1)*
i_2	Input terminal 2 (i2)*
	Input terminal, the potential will pass through the output terminal
	Output terminal

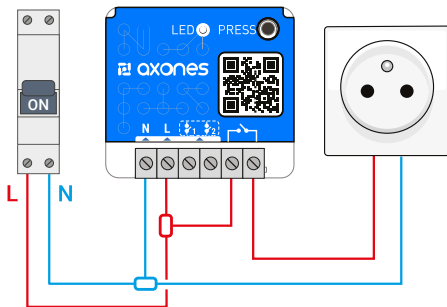
Each terminal can accept a cable of 2.5mm² maximum, stripped of 8mm.

*input not applicable on the AX-ANC-FR001 module.



Installation diagrams

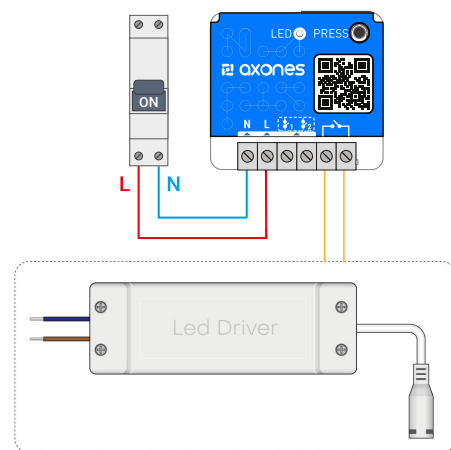
Electrical Outlet*



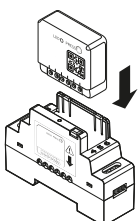
*Note:

- Power supply 230V AC ~50Hz
- Maximum power 2300W (Resistive Load)
- Switching capacity 230V AC – 10A // 30V DC – 10A

LED Driver*



Accessories



TIPS

Add the AX-ANC-FR001 multifunction relay switch to the electric panel with DIN Rail Box**.

Ref. AX-ACC-001

**Accessories are optional

